

## Wall Mounted Touch Panel

Scanstrip AC PANEL

Art.nr. 71153-01/15

# ANETA PROFESSIONAL

4 Zone/1-5 color/Glass touch panel/Color slide/AC input/DMX 512 and RF 2.4G signal output



AC PANEL

### Features

- Touch panel 4 zone 1-5 color DMX512 master, can also be used as 4 zone 1-5 color RF remote.
- DMX signal output, comply to standard DMX512 protocol, compatible with DMX decoder from any supplier.
- When used as RF remote, each zone can remote control multiple RF 2.4G LED controllers.
- Ultra sensitive high strength glass touch panel with touch color slide in the middle.
- Smooth and accurate color adjustment by touching the color slide.
- Touch keys with LED indicator.
- White & Black glass panel available.

CE RoHS LVD RED

### Technical Parameters

Model No.	AC PANEL
light type	RGB+CCT
Output DMX channel number	20

#### Input and Output

Input voltage	100-240VAC
Input current	Max 0.1A
Output signal	DMX512, RF 2.4GHz

#### Safety and EMC

EMC standard [EMC]	ETSI EN 301 489-1 V2.2.3 ETSI EN 301 489-17 V3.2.4
Safety standard [LVD]	EN 62368-1:2020+A11:2020
Radio Equipment [RED]	ETSI EN 300 328 V2.2.2
Certification	CE, EMC, LVD, RED

#### Warranty

Warranty	5 years
----------	---------

#### Dimming data

Input signal	Touch key + RF 2.4GHz
RF Control distance	10m[Barrier-free space]
Dimming level	256 levels
Dimming range	0-100%

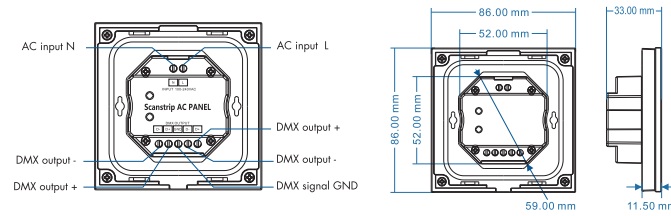
#### Environment

Operation temperature	Ta: -30°C ~ +55°C
Case temperature (Max.)	Tc: +65°C
IP rating	IP20

#### Weight

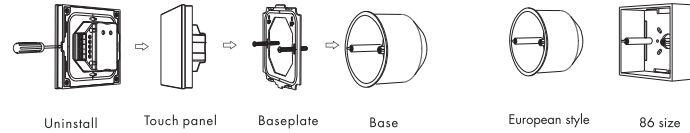
Net weight	0.176kg
Gross weight	0.230kg

### Mechanical Structures and Installations



Installation diagram:

Typical base as below:



### Key function

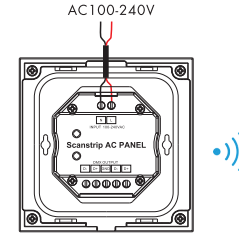
AC PANEL - RGB+CCT panel



- Turn on/off all zone light.
  - RGB color / Color temperature slide.
  - Switch between RGB color / Color temperature slide.
  - Short press play 10 builtin dynamic mode, long press 2s run mode-cycle.
  - Adjust dynamic mode speed or static color brightness, 10 levels.
- 1 2 3 4**  
Zone Zone Zone Zone  
Short press turn on zone light and select zone simultaneously, long press 2s turn off zone light.  
4 zone control separately or synchronously, each zone could control multiple receivers.

**Turn on key tone:** long press power key for 5s when all zone light is off, will turn on or turn off key tone.

### Wiring Diagram for touch panel work as RF remote



### RGB+CCT dynamic mode list (only for T15-1)

No.	Name	No.	Name
1	RGB jump	6	RGB fade in and out
2	RGB smooth	7	Red fade in and out
3	6 color jump	8	Green fade in and out
4	6 color smooth	9	Blue fade in and out
5	Color temperature smooth	10	White fade in and out

### Malfunctions analysis & troubleshooting

Malfunctions	Causes	Troubleshooting
No light	1. No power. 2. Wrong connection or insecure.	1. Check the power. 2. Check the connection.
Wrong color	1. DMX decoder first address error. 2. Wrong connection of output wires.	1. Check the DMX first address. 2. Reconnect output wires.

